

A DJR LIMITED RELEASE

KLOOSTER

KLOOSTER, an expressive uncial by David Jonathan Ross

SET

BLICE

ROQUES

WARDING

AMPHIBIAN

OPTIDIOD

REWRAP

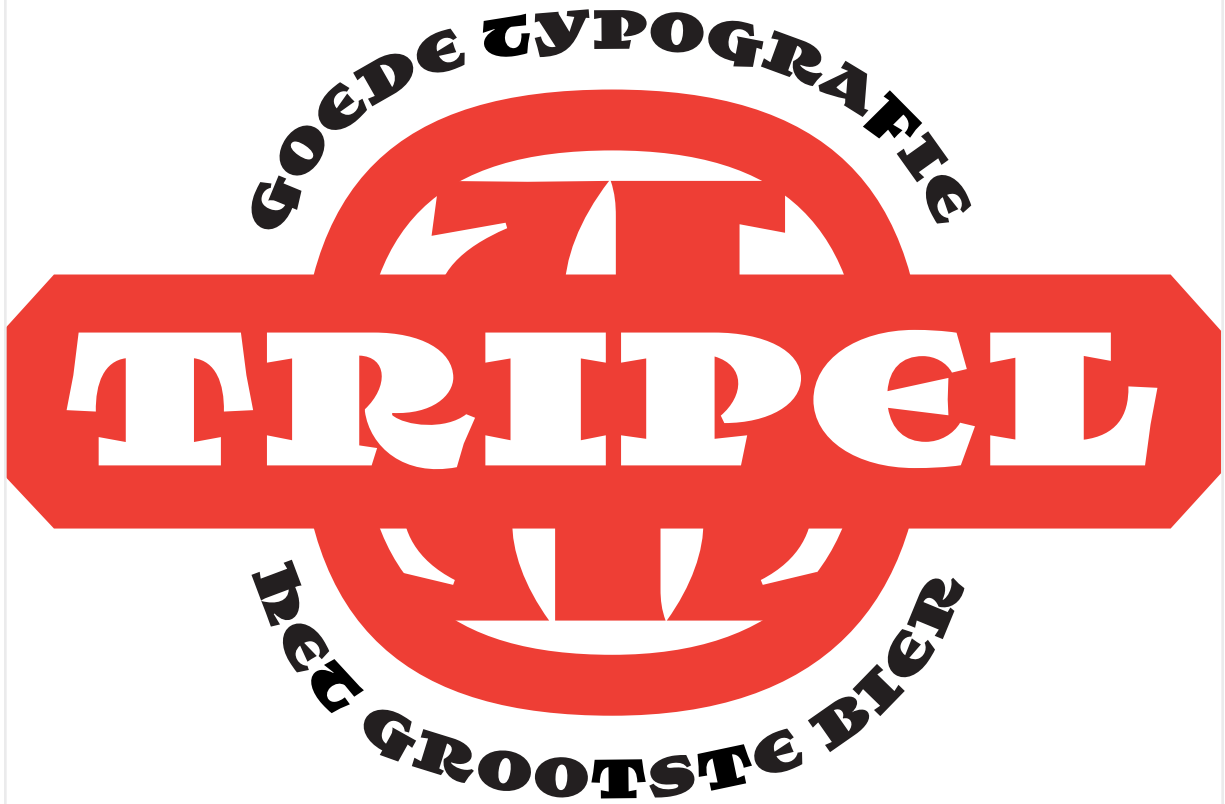
LEASTIDG

SALCTIER

DREAMY

BADTAD

BROUWERIJ
✠ **ST MARTENS** ✠



✠ **1836** ✠



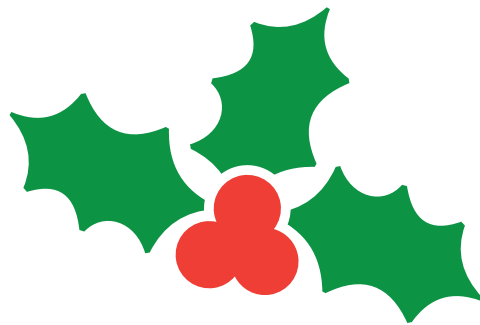
THIS DIPLOMA CERTIFIES THAT

L. E. HAUSER

**HAS COMPLETED THE COURSE REQUIREMENTS
AND HAS BEEN AWARDED THE DEGREE OF**

**TREEHOUSE
DESIGN**

ON THE FIRST OF JANUARY 1917



**SEASON'S
GREETINGS**

■ FROM THE LIBRARY OF ■
■ DAVID JORDATHAD ROSS ■
ROSS
■ EX BIBLIOTHECA ARTEM ■

DOWN ON THE GREEN ISLE OF ERIN, KING CONCOBAR DWELT WITH THOUGHTS OF REVENGE. SO HE MADE A FEAST AS MAGNIFICENT AS HAD EVER BEEN SEEN ON THE GREEN ISLE, AND TO IT WERE CALLED ALL OF THE PRINCES AND NOBLES THAT LIVED IN THE ISLANDS WHERE CONCOBAR HELD SWAY. IT WAS IN THE MIDST OF THIS WHEN A RUSH FELL UPON THE COMPANY, WHILE CONCOBAR SPOKE OF HIS DEEP & BITTER DISCONTENT. ✠

VIDEO TOWNLEY DOT
VIDEO TOWNLEY DOT

Minuscule forms (D, T, V, Y)
 font-feature-settings: 'ss01'

JAM PROFILE FROGS
JAM PROFILE FROGS

Descending F and P
 font-feature-settings: 'ss02'

BRICK HAMBURGER
BRICK HAMBURGER

Ascending B and K
 font-feature-settings: 'ss03'

EARTH AND HEAVEN
EARTH AND HEAVEN

Cap-style forms (H, E)
 font-feature-settings: 'ss04'

AWESOME WIDDOWS
AWESOME WIDDOWS

Diagonal W
 font-feature-settings: 'ss05'

Klooster is a thick, broad titling face modeled after the uncial script. While the uncial script dates back to the fourth century, this rendition has its origins in a twentieth century *ex-libris* shown in D. Giltay Veth's 1950 book *Dutch Bookplates: A selection of modern woodcuts & wood engravings*. Some letters resemble Roman capitals as we know them, while others lean towards the rounded forms destined to eventually become our lowercase. Bursting with energy, Klooster's harsh angles contrast with its gestural curves.

Available formats:

Desktop	OpenType CFF (OTF)
Web	WOFF, WOFF2, EOT
App/E-book	OpenType TrueType (TTF)

Designer: David Jonathan Ross

DJR draws letters of all shapes and sizes for custom and retail typeface designs. A native of Los Angeles, he began drawing typefaces at Hampshire College and joined The Font Bureau in 2007 where he honed his bézier-wrangling skills. Now he publishes visually imaginative and technically advanced designs at his own foundry, including Fit, Manicotti, Input, Gimlet, and Bungee. You'll find him in Western Massachusetts with his partner Emily and their two dogs, Sophie and Lily.

Supported Languages include:

Afrikaans, Albanian, Alsatian, Basque, Bislama, Bosnian (Latin), Breton, Catalan, Chamorro, Croatian, Czech, Danish, Dutch, English, Estonian, Faroese, Finnish, Flemish, Franco-Provençal, French, Frisian, Friulian, Galician, German, Greenlandic, Hungarian, Icelandic, Indonesian, Irish, Italian, Kurdish (Latin), Ladin, Latin, Latvian, Lithuanian, Luxembourgish, Malay, Manx Gaelic, Moldovan, Norwegian (Bokmål, Nynorsk), Occitan, Polish, Portuguese, Rhaeto-Romance, Romanian, Romansh, Sami (Inari, Lule, Northern, Skolt, Southern), Scottish Gaelic, Slovak, Sorbian, Slovenian, Spanish, Swahili, Swedish, Tagalog, Turkish, Uzbek (Latin), Vietnamese, Walloon, Welsh.

DJR

P.O. Box 461	www.djr.com
Conway, MA 01341	david@djr.com
USA	+1 339.224.7687

© David Jonathan Ross 2017