

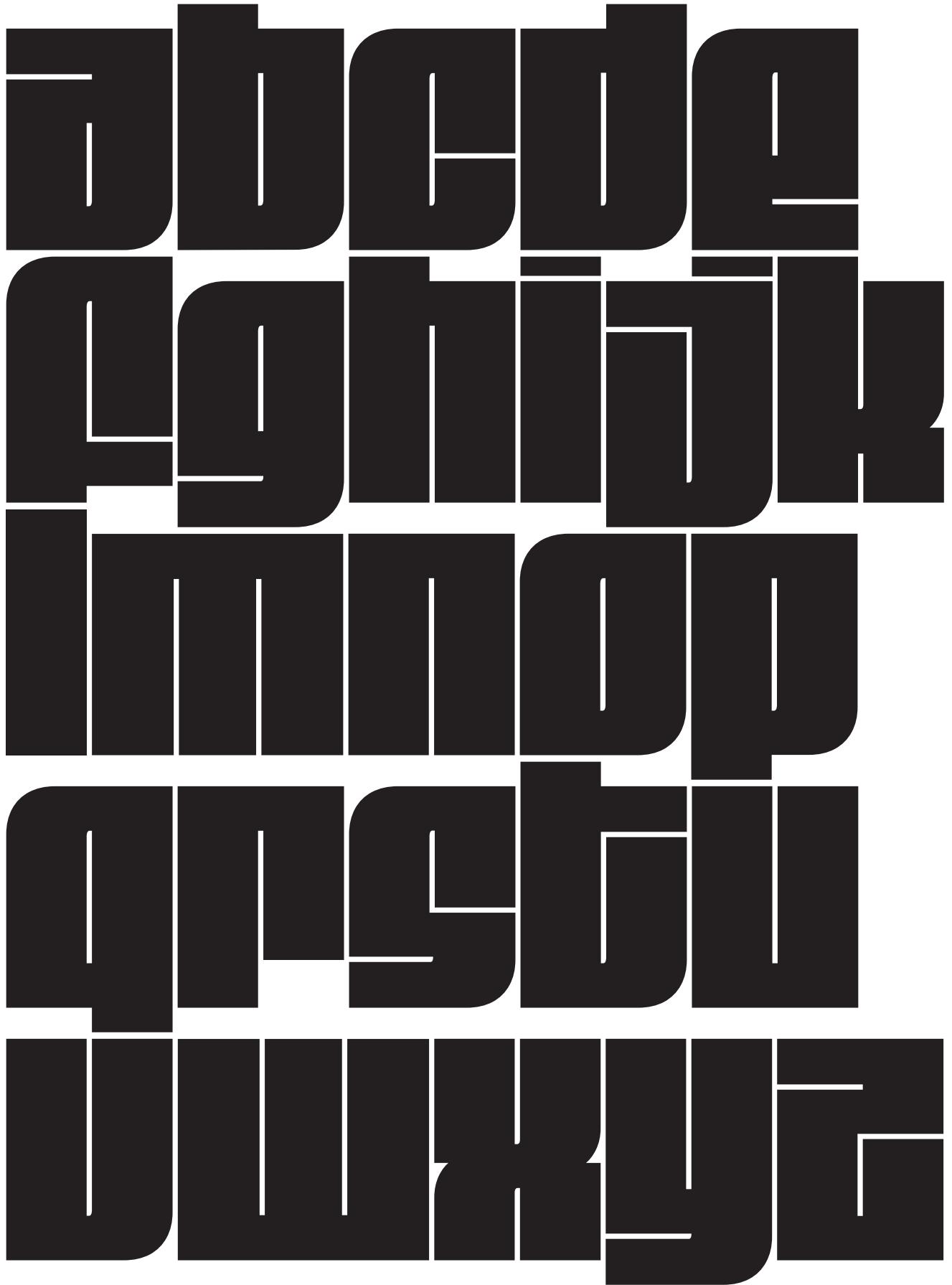
A font that makes text fit, by David Jonathan Ross (now with lowercase!)

djr.com/fit

It
makes
you
wonder
if

to the

to the



DATE

AVOCADOS

DOMESTIC

MONTANA DELICIOUS

AMERICAN RED ELDONBERRY

MEMBER

YOU'VE OWNED

REPUTATION PROTECTION

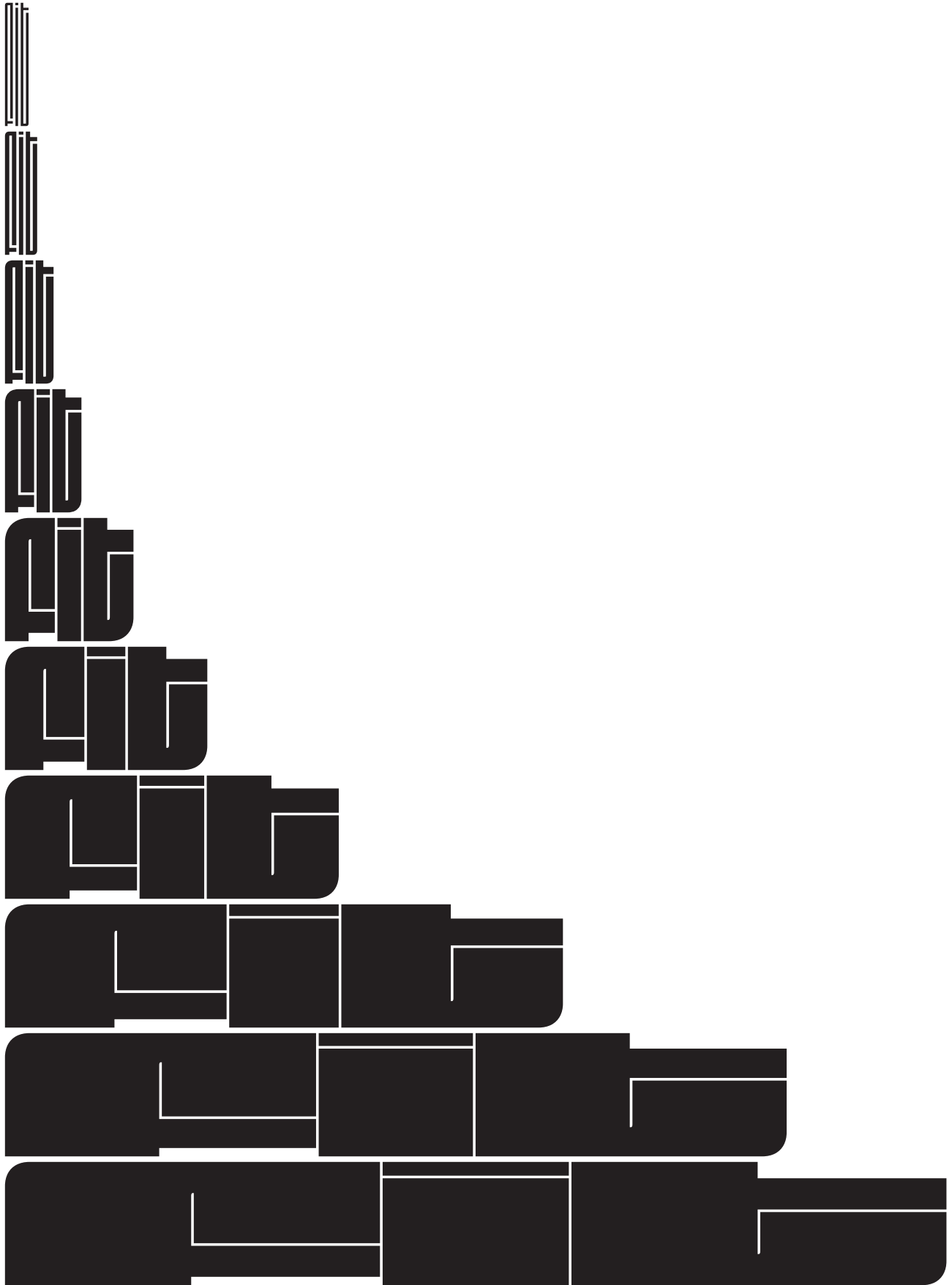
Unreel

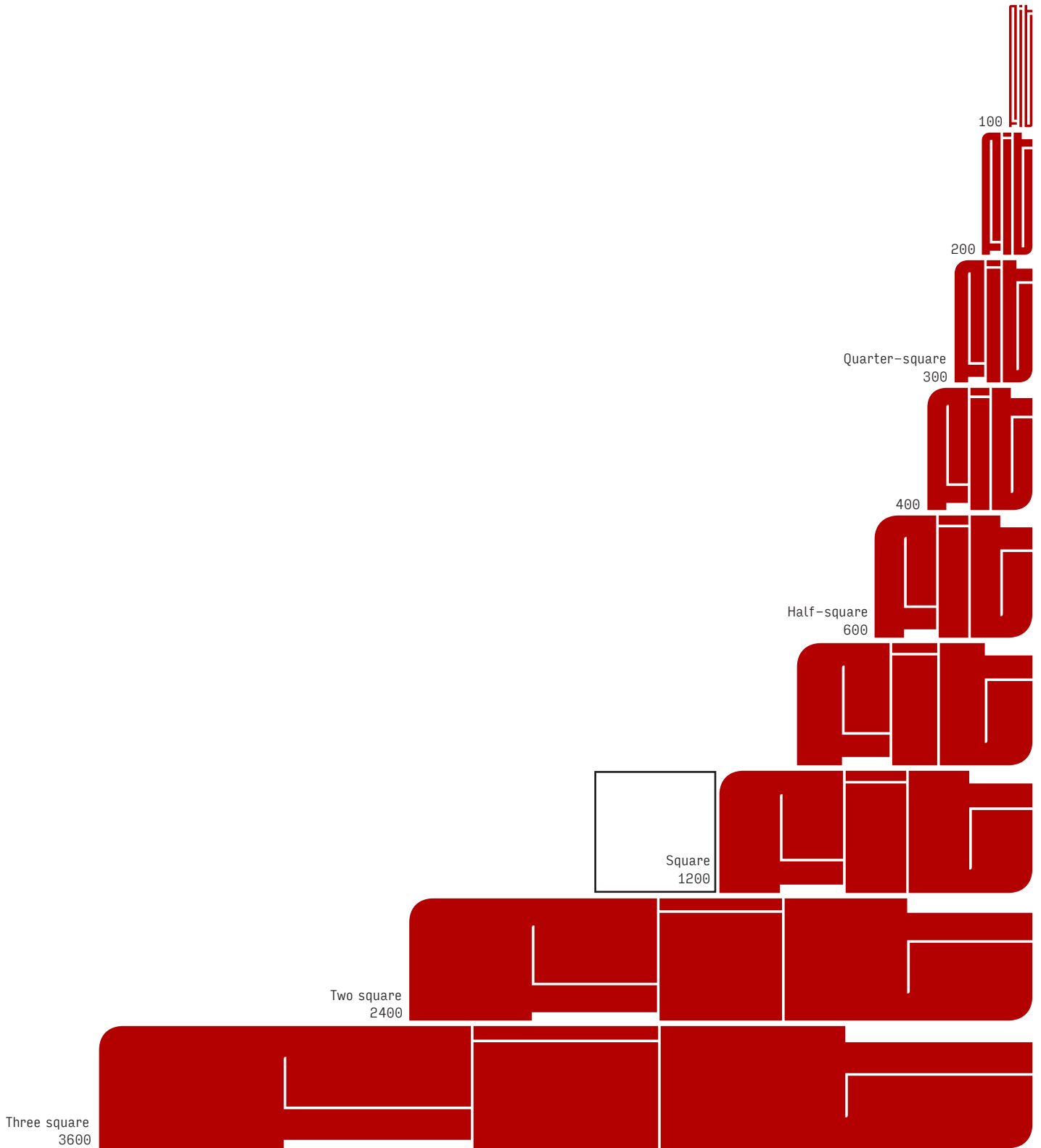
Diminished

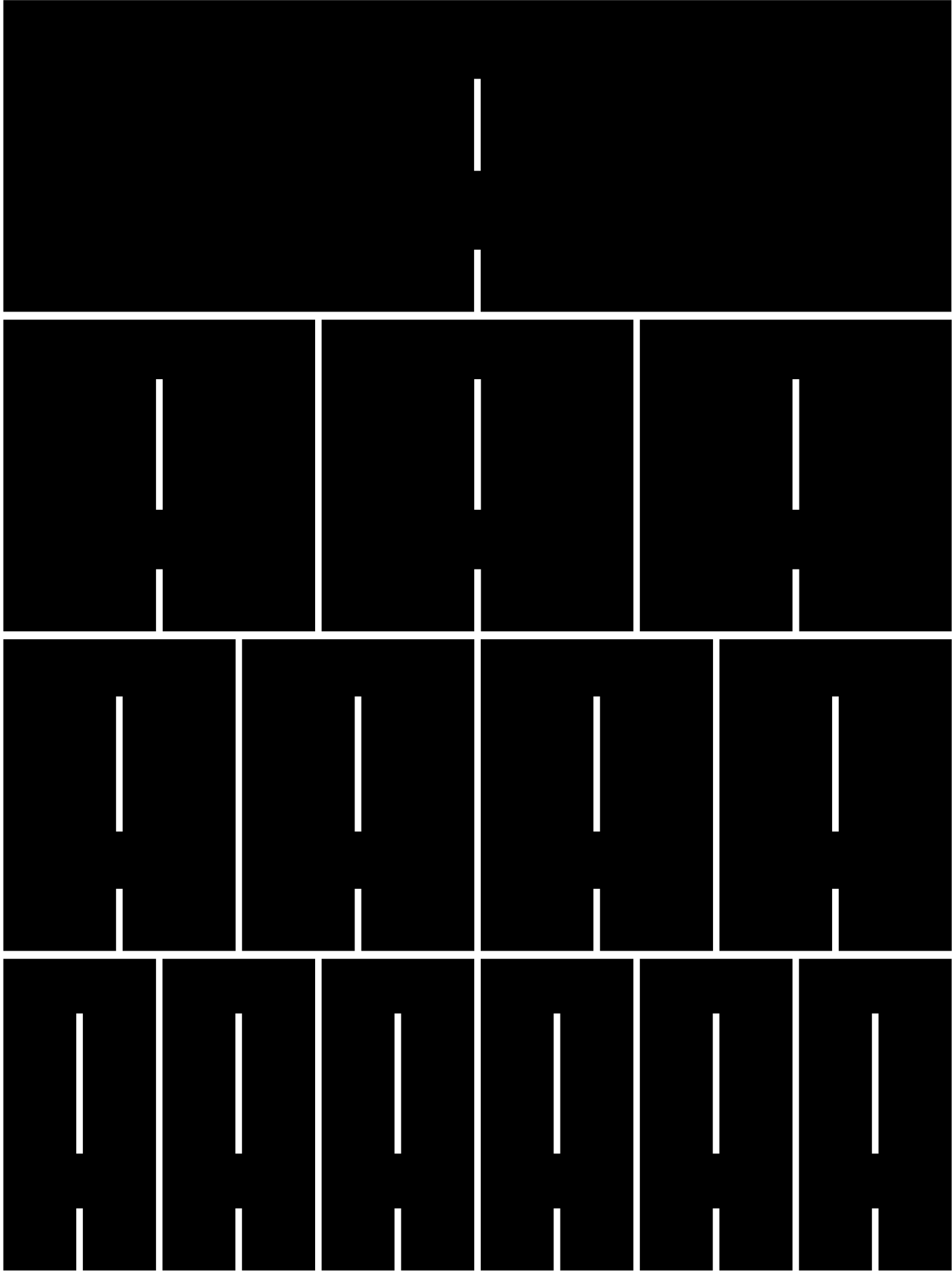
Whammy Bars

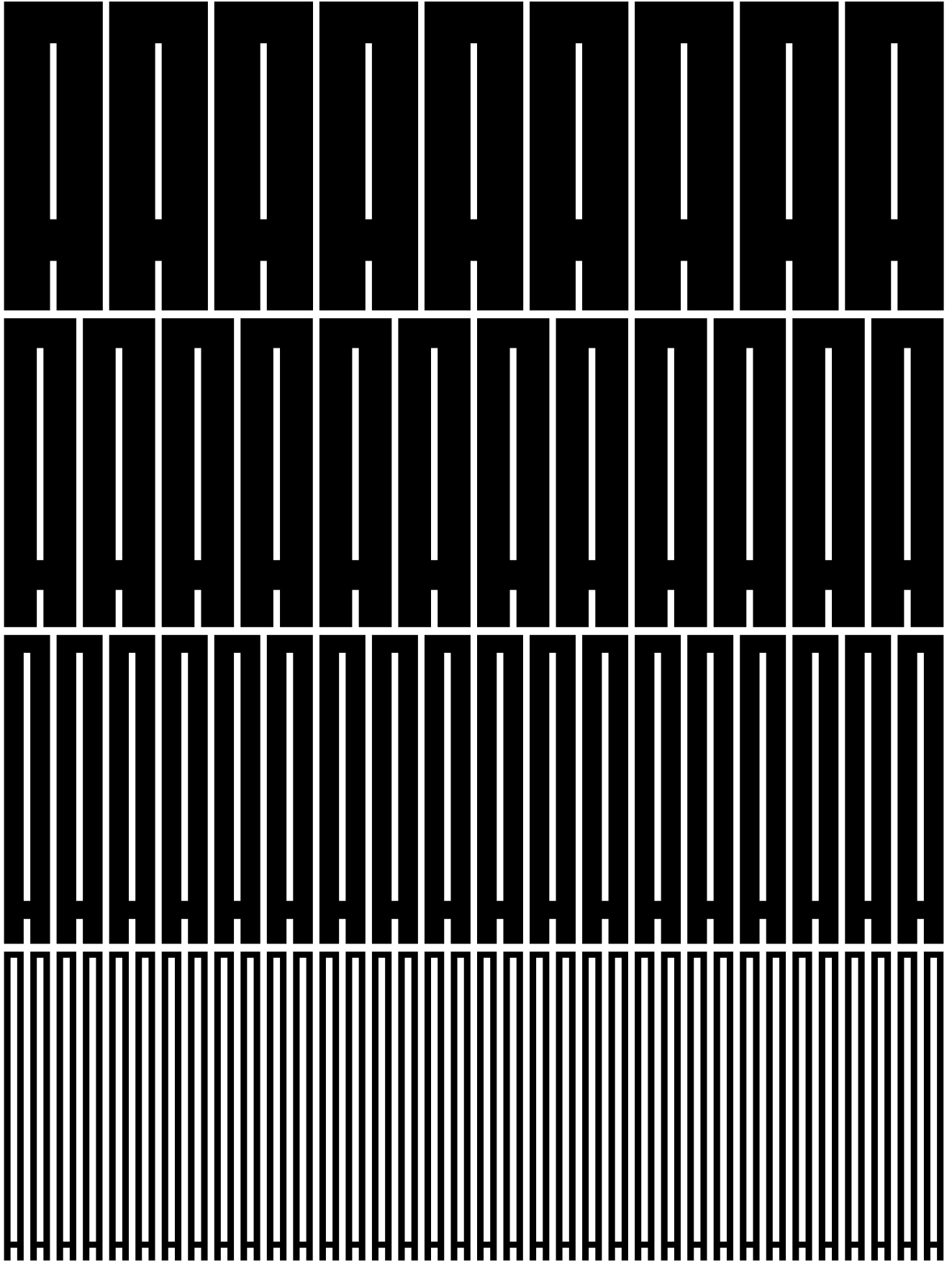
Antidigital Harmonic

Humbecker Switch Pickup



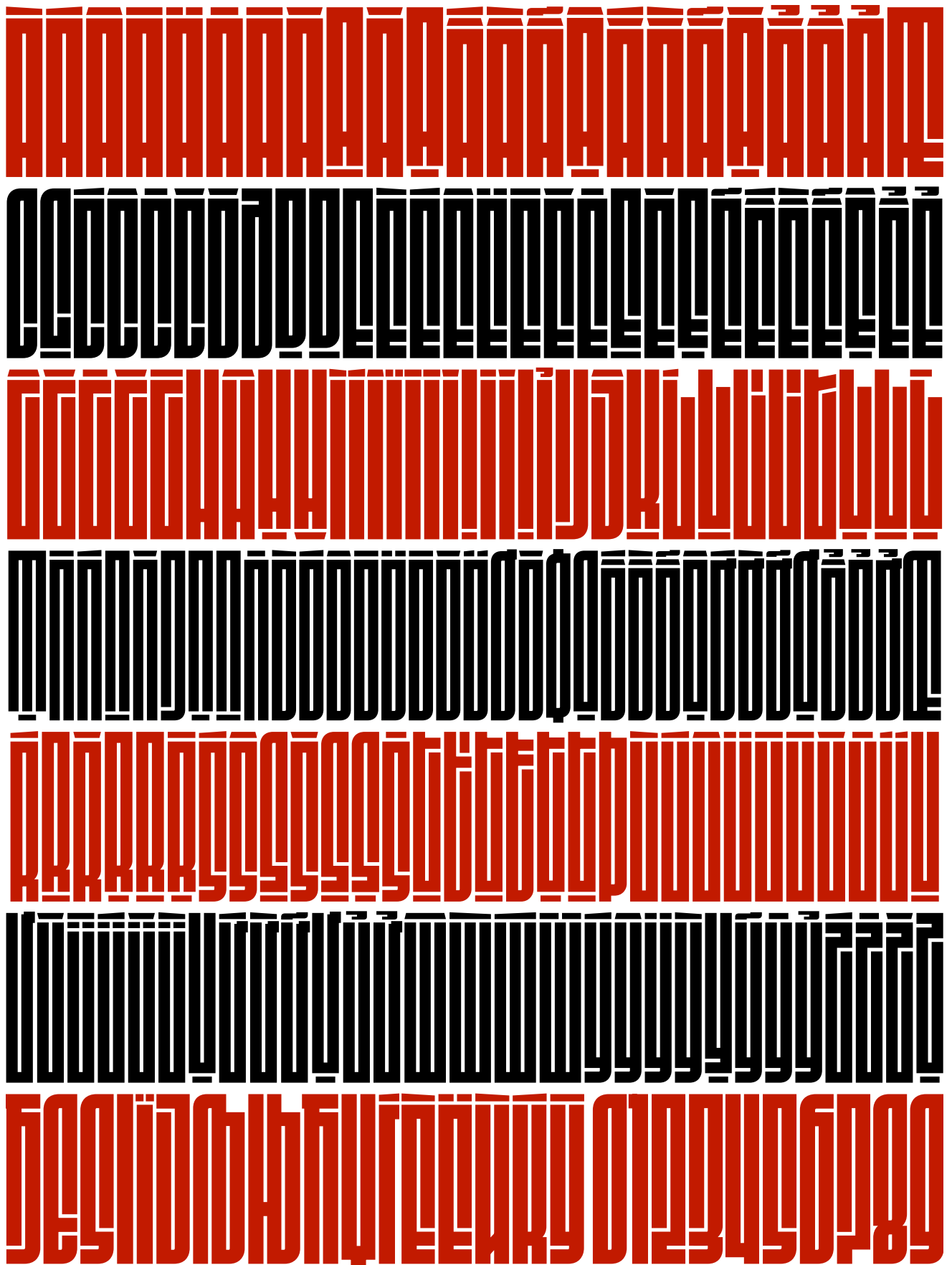






COMPUTACIÓN	ВЫРАЖЕНИЯ
PRODUCTO DISEÑO	ПАРТНЕРСТВО
ДИЗАЙН	МАЛОСЕРУ
СТРАНА	ДИЗАЙН
ДИЗАЙН	МАНДА
ДИЗАЙН	ДИЗАЙН
ДИЗАЙН	ДИЗАЙН

ΑΒΓΔΕΖΗΘΙΚΛΜ
ΝΟΡΡΡΡΣΤΥΦΧΨΩ
ΑΒΓΔΕΖΗΘΙΚΛΜ
ΝΟΡΡΡΡΣΤΥΦΧΨΩ
ΑΒΓΔΕΖΗΘΙΚΛΜ
ΝΟΡΡΡΡΣΤΥΦΧΨΩ
ΑΒΓΔΕΖΗΘΙΚΛΜ
ΡΣΤΥΦΧΨΩΩΩΩΩΩΩ



POWERS

WORTH

UNICASE ALTERNATES

UNICASE ALTERNATES

TWENTY THEATRICALS

TWENTY THEATRICALS

MORNING GRAPHIC

MORNING GRAPHIC

IMITATION HAWAIIAN

IMITATION HAWAIIAN

CAÑCAÑO VĀ BĀN VĒ

CAÑCAÑO VĀ BĀN VĒ

PAHARGASTSCHIFF

PAHARGASTSCHIFF

JANUARY JUNIPER

JANUARY JUNIPER

Short r
Stylistic Set 18

Garden Marmalade
Garden Marmalade

Single-story a
Stylistic Set 19

Garden Marmalade
Garden Marmalade

Double-story g
Stylistic Set 20

Regular Magazine
Regular Magazine

Case-sensitive forms
All-caps

DECRANOVSKĀ HVĒZDA
DECRANOVSKĀ HVĒZDA

Small Caps

EXTRAVAGANZA CARD
EXTRAVAGANZA CARD

Blocks
Maps onto QWERTY keyboard

QWERTYUIOPASDFGH
QWERTYUIOPASDFGH

Note: I should probably reorganize the stylistic sets before a retail release!



FIT is a high-impact design that helps you fit just about any text into just about any space. To accomplish this task, Fit comes in an expansive range of widths; beginning with the impossibly narrow Skyline, each character grows by 3600% (on average) to reach the gargantuan Ultra Extended. In between these extremes, you will find a family rich in panache and expressive potential. Fit is one of the first typefaces to ship as an OpenType Variable Font, uniting its many widths into a single, fittable font.

Available Formats:

Desktop OpenType CFF (OTF)
Web WOFF, WOFF2
App/E-book OpenType TrueType (TTF)

Designer: David Jonathan Ross, 2017, 2024, with additional drawing by Gor Jihanian. Fit is also available separately for Hebrew, designed by Oded Ezer; Armenian, designed by Gor Jihanian; Devanagari, designed by Kimya Gandhi; and Tamil, designed by Adarsh Rajan. More scripts to come!

DJR draws letters of all shapes and sizes for custom and retail typeface designs. A native of Los Angeles, He began drawing typefaces at Hampshire College and joined The Font Bureau in 2007 where he honed his bézier-wrangling skills. Now he publishes visually imaginative and technically advanced designs at his own foundry.

Special Thanks: Chris Lewis, Maria Doreuli, Donny Truong, Marina Chaccur, Grzegorz Rolek, Jill Pichotta, Alexandre Saumier Demers, Myles Maxfield, Indra Kupferschmid, Nick Sherman, Rachel Elnar, Michael Doret, Jovana Jocić, and to all the folks who worked to make variable fonts a reality!

Supported Languages Include:

Afrikaans, Albanian, Alsatian, Armenian, Azeri, Basque, Belarusian, Bislama, Bosnian, Breton, Bulgarian, Catalan, Chamorro, Croatian, Czech, Danish, Dutch, English, Estonian, Faroese, Finnish, Flemish, Franco-Provençal, French, Frisian, Friulian, Galician, German, Greek, Greenlandic, Hebrew, Hungarian, Icelandic, Indonesian, Irish, Italian, Kazakh, Kyrgyz, Kurdish (Latin), Ladin, Latin, Latvian, Lithuanian, Luxembourgish, Macedonian, Malay, Manx Gaelic, Moldovian, Mongolian (Cyrillic), Norwegian (Bokmål, Nynorsk), Occitan, Polish, Portuguese, Rhaeto-Romance, Romanian, Romansh, Russian, Sami (Inari, Lule, Northern, Skolt, Southern), Serbian, Scottish Gaelic, Slovak, Sorbian, Slovenian, Spanish, Swahili, Swedish, Tagalog, Tatar, Turkish, Ukrainian, Uzbek, Vietnamese, Walloon, Welsh.

DJR

P.O. Box 461 www.djr.com
 Conway, MA 01341 david@djr.com
 USA +1 339.224.7687

This specimen is for evaluation purposes only. © David Jonathan Ross